



# DirectFix

**We Provide the Parts - You Fix It**

## INSTALLATION DIRECTIONS

APPLE IPAD & IPAD 3G TOUCH PANEL, DIGITIZER GLASSTOP REPLACEMENT IP-2387



T4 Torx  
Driver  
Tool Kit XX2398



Case  
Opener  
Tool XX1521



Step #1

Use the case opener tool to loosen the seal between the case and the screen. Use the end of the case opener tool around the entire edge for best results.



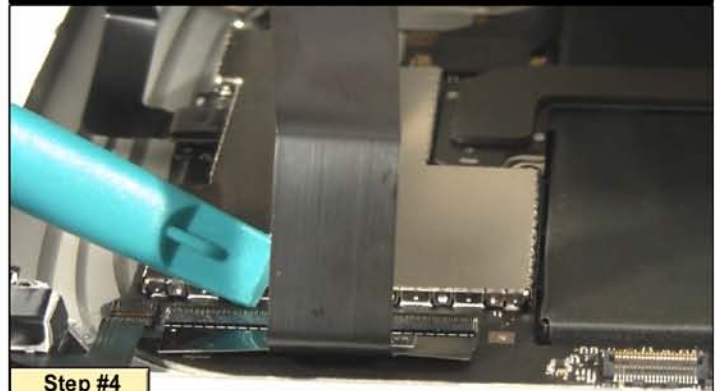
Step #2

Use the case opener tool and a flat head screwdriver to extract the screen. **WARNING:** Cables attached. See next step. Note: Broken clips can be replaced: IP-2396



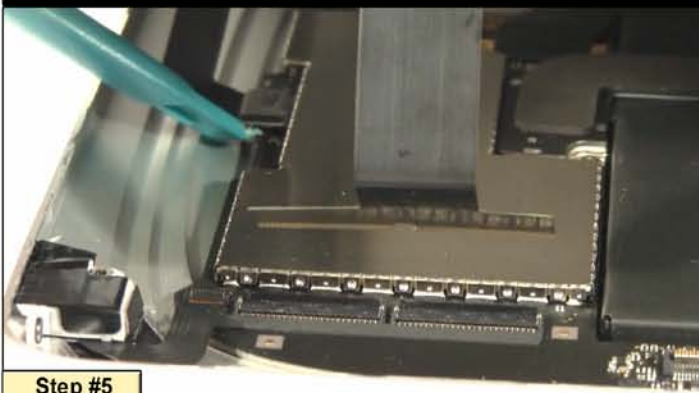
Step #3

Note the attached cables attaching the screen assembly to the motherboard.



Step #4

Use the case opener tool to release the plastic connector lever shown on both connection points. After the levers have been lifted, the cable will slide out.



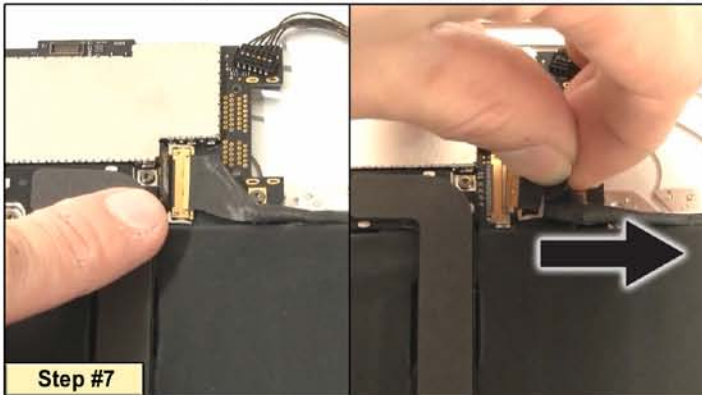
Step #5

A second cable, that must be disconnected to remove the screen from the case, is pictured here just behind the ribbon cable in the previous step.



Step #6

A third cable connects the LCD will need to be disconnected before the screen can be separated. Refer to the next step for details on this cable.



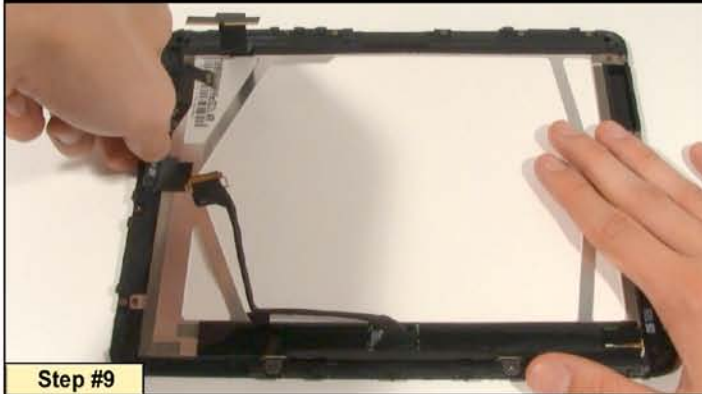
Step #7

The pictured connector uses a latching mechanism to join with the motherboard. Pull the latch up and then slide the connector out as pictured.



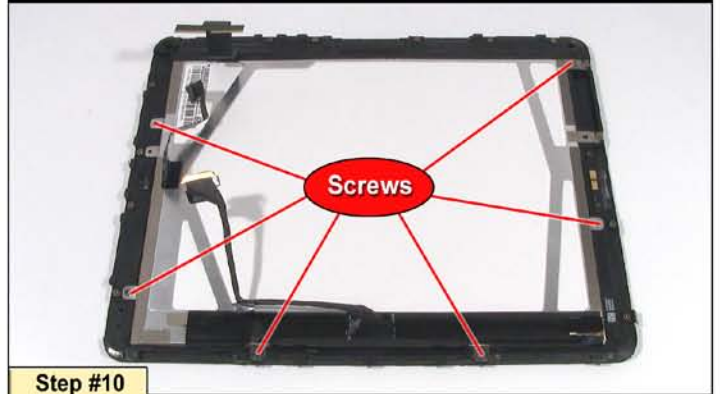
Step #8

This cable is taped to part of the battery frame. Remove the tape from the battery frame. The screen assembly can now be separated.



Step #9

Pictured is another connector attached to the LCD which needs to be disconnected in order to continue.



Step #10

Remove the screws that connect the LCD screen to the glasstop.



Step #11

Pictured is a thin film which must be separated from the LCD in order to remove the LCD from the glasstop.



Step #12

The screws holding the LCD to the glasstop have been removed. Carefully use a flat head screwdriver to separate the LCD from the glasstop.



Step #13

The LCD screen can now be removed from the glasstop. Set LCD aside and prepare new glasstop for reassembly.



Step #14

The LCD is exposed at this stage and should be handled carefully to avoid scratches.



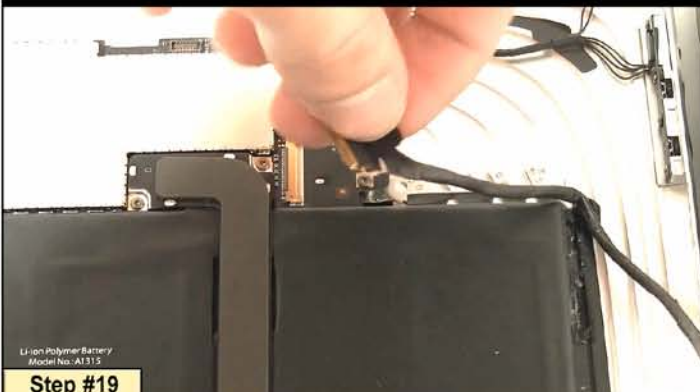
Step #15

Position the LCD screen to match the screw mounts in the glasstop. Carefully lower into position avoiding damage to the surface of the LCD.



Step #17

Replace the screws that fasten the LCD to the glasstop.



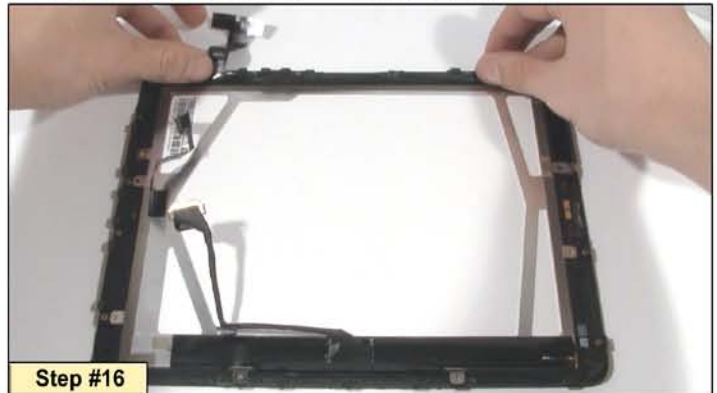
Step #19

The connector shown will connect the screen to the motherboard. Position the cable as shown as it must go around the battery for the case to properly close.



Step #21

Carefully position the screen over the case leaving the left side open. There are two cables that need to be reconnected.



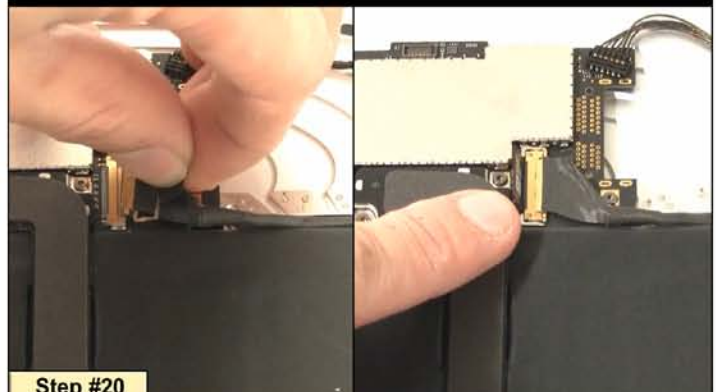
Step #16

Replace the thin lining as pictured over the LCD once it is in position.



Step #18

Replace the connector shown.



Step #20

The pictured connector uses a latching mechanism to join with the motherboard. Reconnect the cable and fasten the latching mechanism.



Step #22

Reconnect the cable shown and use the case opener tool to reposition the lever over both sides of the connector to fasten it to the motherboard.

PAGE 4: INSTALLATION DIRECTIONS FOR IP-2387 (CONTINUED)

