

INSTALLATION DIRECTIONS PALM TX & PALM TUNGSTEN T5 REPLACEMENT BATTERY PA2172



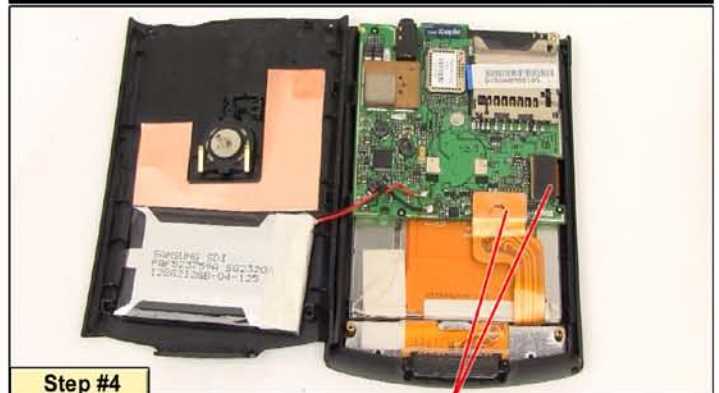
Remove the four screws from the back case pictured.



Use the case opener tool around the outside edge of the case to separate the back cover from the case.



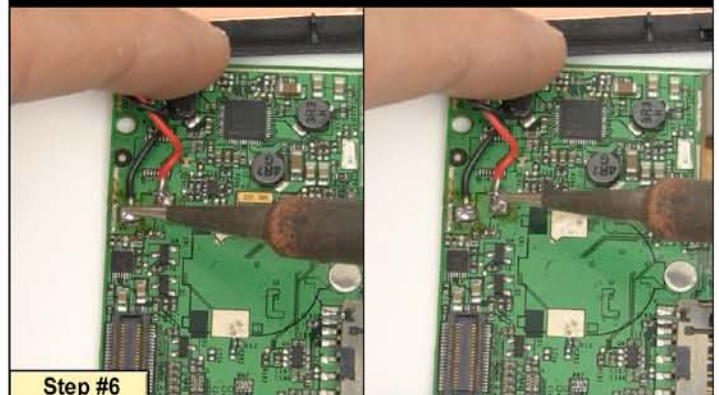
Remove the plastic bracket at the top of the unit.



Use a case opener to disconnect the two cables connecting components to the motherboard.



Remove motherboard from case.

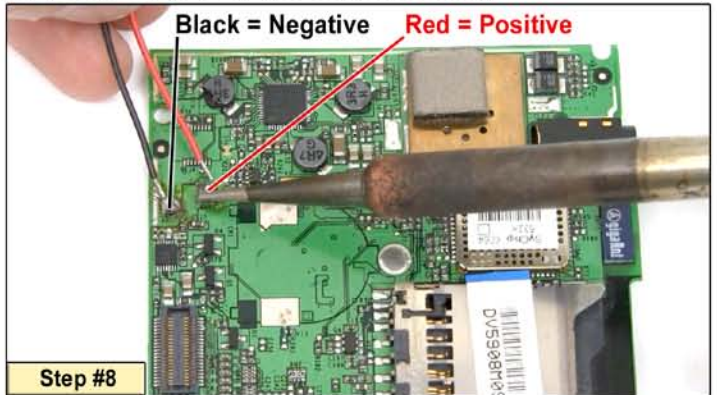


Use a soldering iron to remove the battery connectors.



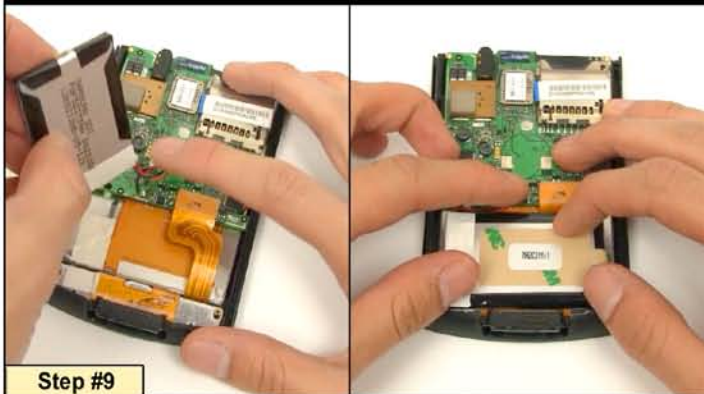
Step #7

The replacement battery will have a protective covering over the exposed ends of the wires. Remove this covering and prepare to solder the connections.



Step #8

Solder the battery connections onto the motherboard ensuring the polarity is correct as pictured.



Step #9

The battery will rest on top of the pictured cable.



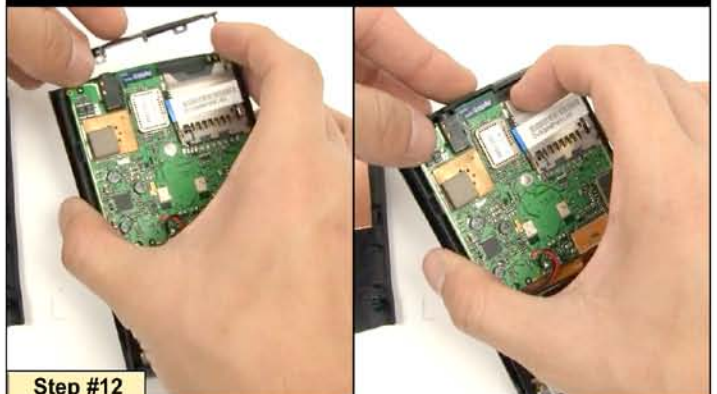
Step #10

Remove the protective backing from the adhesive strip included with battery.



Step #11

The top plastic frame bracket consists of two peices. If they came apart in the disassembly it is easy to reassemble.



Step #12

Replace the top plastic frame into the case as pictured.



Step #13

Replace the back cover from the bottom using the plastic lip as a fastener.



Step #14

Replace the screws into the back case cover to complete the assembly.