



# DirectFix

**We Provide the Parts - You Fix It**

## INSTALLATION DIRECTIONS

PALM TX, PALM LIFEDRIVE, T3 & T5 REPLACEMENT SCREEN WITH LCD & DIGITIZER PA2089



Step #1

Remove the four screws from the back case pictured.



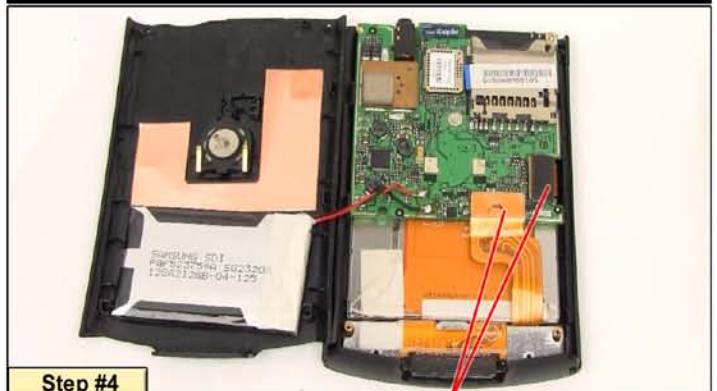
Step #2

Use the case opener tool around the outside edge of the case to separate the back cover from the case.



Step #3

Remove the plastic bracket at the top of the unit.



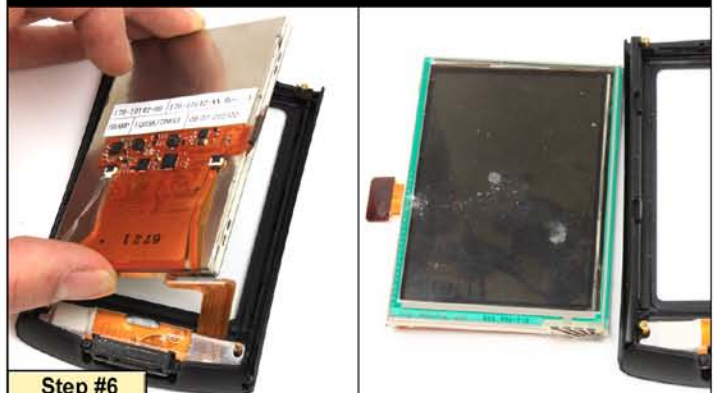
Step #4

Use a case opener to disconnect the two cables connecting components to the motherboard.



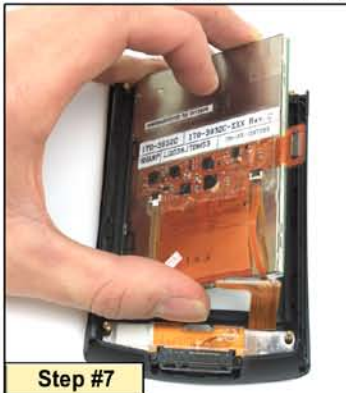
Step #5

Remove motherboard from case.



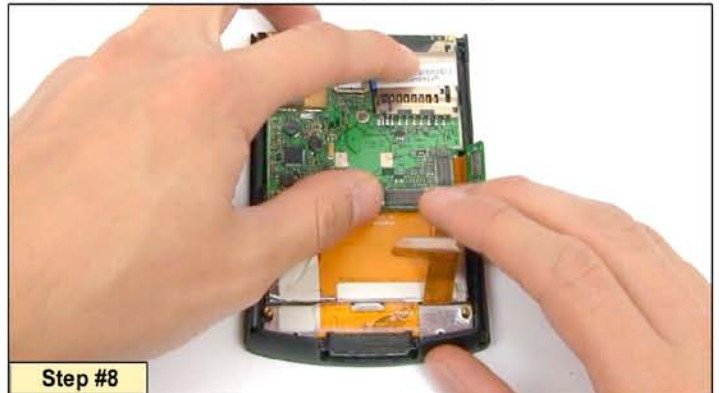
Step #6

The damaged LCD screen must be removed carefully.



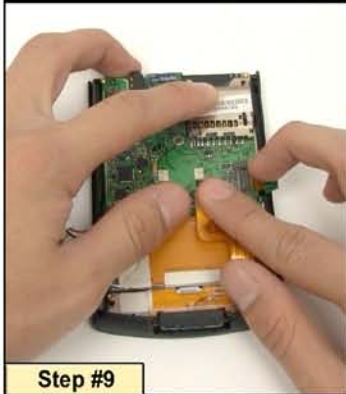
Step #7

Place the new LCD screen into the screen frame as pictured avoiding scratches.



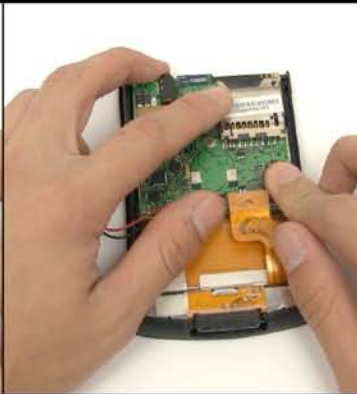
Step #8

Replace the motherboard as pictured.



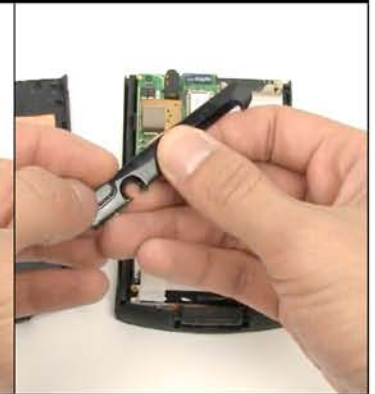
Step #9

Reconnect the component cables to the motherboard.



Step #10

The top plastic frame bracket consists of two pieces. If they came apart in the disassembly it is easy to reassemble.



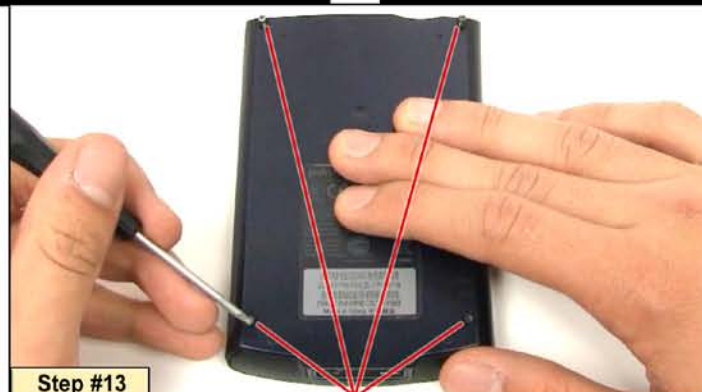
Step #11

Replace the top plastic frame into the case as pictured.



Step #12

Replace the back cover from the bottom using the plastic lip as a fastener.



Step #13

Replace the screws into the back case cover to complete the assembly.