



DirectFix

We Provide the Parts - You Fix It

INSTALLATION DIRECTIONS IPOD TOUCH GEN 2 BATTERY REPLACEMENT IP-2344

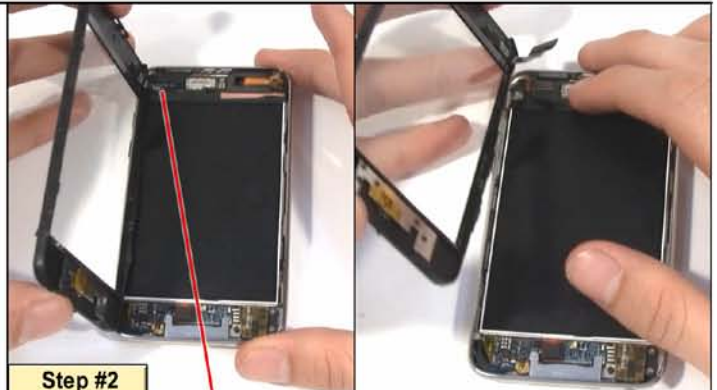


Case Opener Tool XX1521



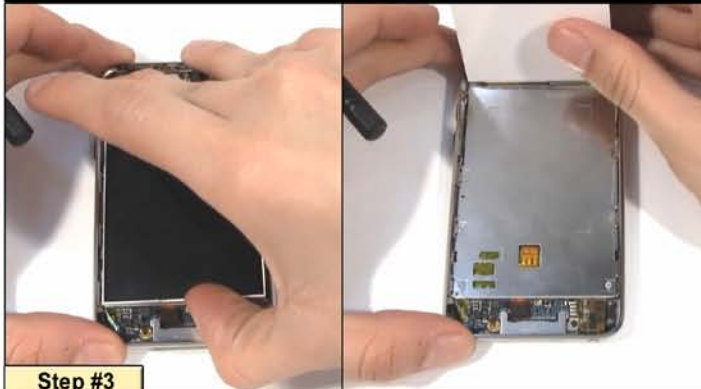
Step #1

Use the case opener tool to carefully extract the glasstop. **NOTE:** There is a cable attached to the screen that must be disconnected before complete removal.



Step #2

Disconnect the cable pictured connecting the glasstop to the motherboard.



Step #3

Lift the LCD unit up from the bottom to expose seven screws which must be removed. **WARNING:** The LCD is attached with a cable to the motherboard.



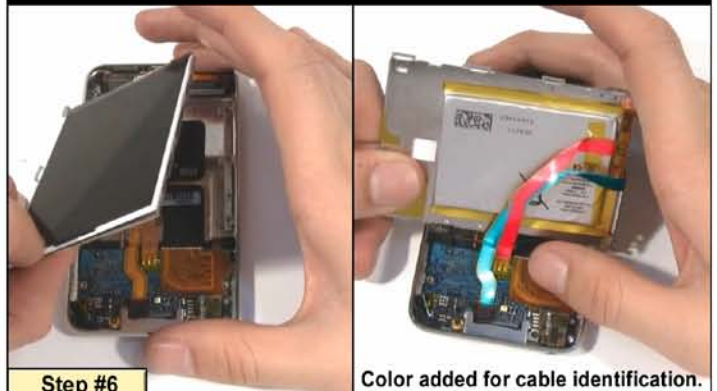
Step #4

Remove the seven screws pictured here.



Step #5

Lower the LCD back into the original position and remove the remaining screw connecting the LCD plate to the case. **WARNING:** Cables attached. Do not damage!



Step #6

Color added for cable identification.

Lift the LCD and LCD plate up carefully noting the attached cables, their positions and connections.



Step #7

Remove the pictured connector from the motherboard.



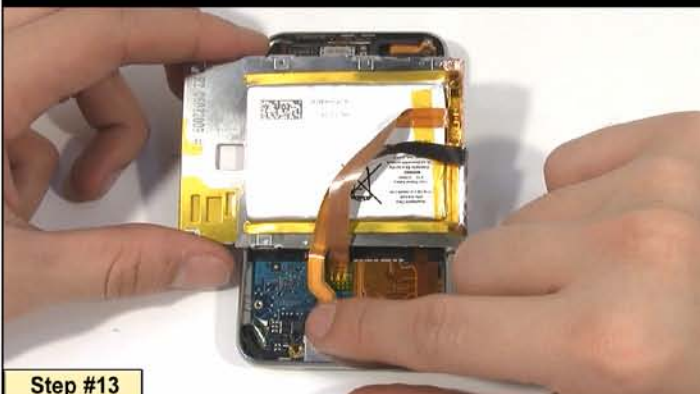
Step #9

Use the case opener tool to separate the battery and LCD plate.



Step #11

Place the replacement battery as pictured onto the back of the LCD frame.



Step #13

Replace connection as pictured.



Step #8

Separate the LCD Screen from the LCD plate as pictured.



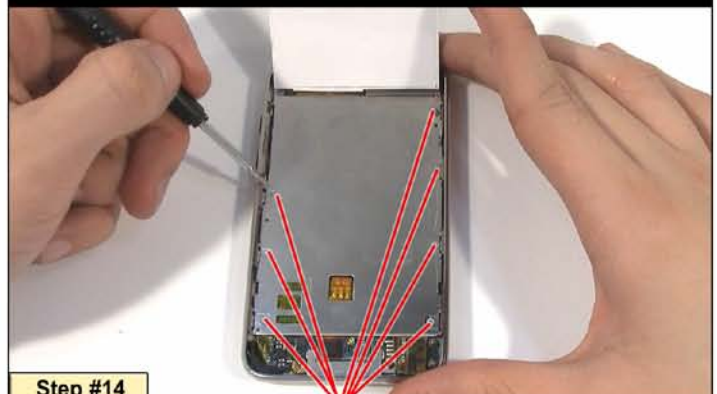
Step #10

The battery is connected to the motherboard directly with solder. A soldering iron and solder will be required to remove and replace the battery.



Step #12

Replace the LCD as pictured.



Step #14

Place the LCD bracket as pictured in the case. Replace the seven screws that connect the LCD plate to the case.

PAGE 3: INSTALLATION DIRECTIONS FOR IP-2387 (CONTINUED)



Step #15



Step #16



Place the LCD on the LCD mousing bracket. Replace the screw in the upper left hand corner as pictured.

Reconnect the pictured cable to the motherboard.



Step #17



Complete the assembly by inserting the glasstop assembly into the case.