



DirectFix

We Provide the Parts - You Fix It

INSTALLATION DIRECTIONS IPHONE 3GS REPLACEMENT SCREEN WITH LCD & TOUCH PANEL IP-2322



Sim Card Ejection Tool IP-2292



Mini Philips Driver XX2240



Case Opener Tool XX1521



Screen Removal Suction Cup XX2373

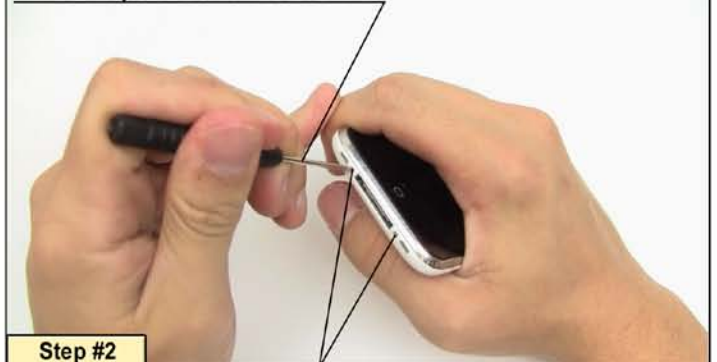
Sim Card Ejection Tool IP-2292



Step #1

Use the simcard ejection tool to remove the simcard and tray from the iPhone 3GS.

Mini Philips Screwdriver XX2240



Step #2

Remove the two phillips head screws from the bottom of the iPhone 3GS. Place them in a container to avoid losing them.

Suction Cup Tool XX2373



Step #3

Place the suction cup tool near the bottom of the glasstop for optimal removal.



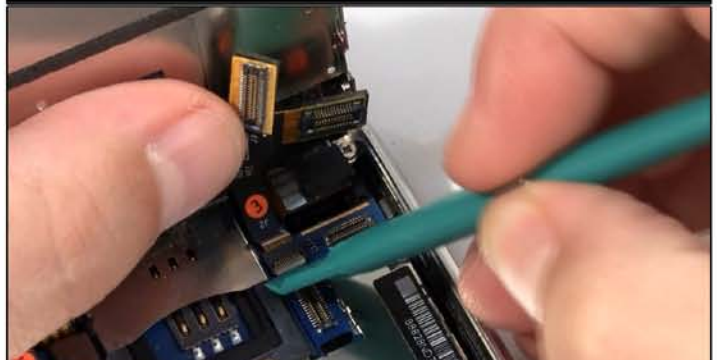
Step #4

Firmly grasp the back of the iPhone and the suction cup and pull apart the phone case carefully. Do not pull too hard as there are still cables connected in the unit.



Step #5

Use the case opener tool to removed the connections marked ① & ②. Avoid excessive force to preserve connector integrity.



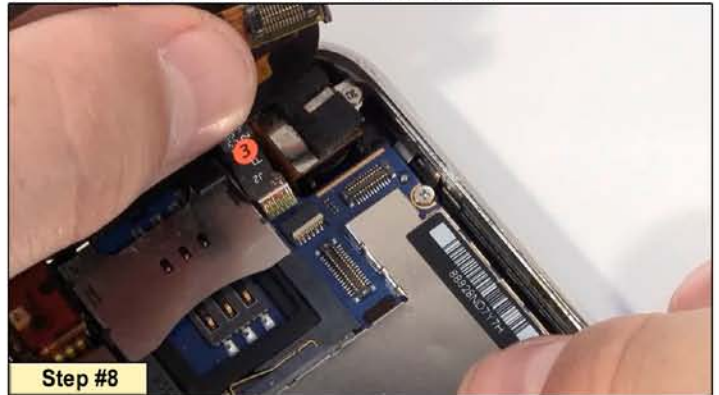
Step #6

Use the case opener tool to lift the small white plastic cable connector. This will allow the ③ ribbon to slide upwards out of the housing.



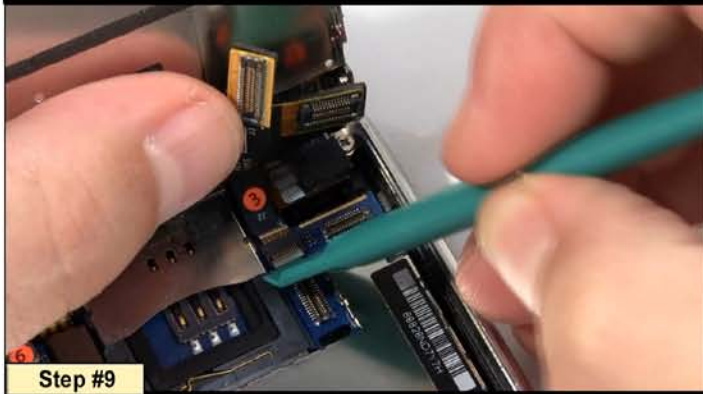
Step #7

Once those connections have been removed you are able to separate the two major sections of the iPhone 3GS. Move to next step to continue replacing IP-2322.



Step #8

Begin installation of screen assembly by sliding **3** ribbon into the connector.



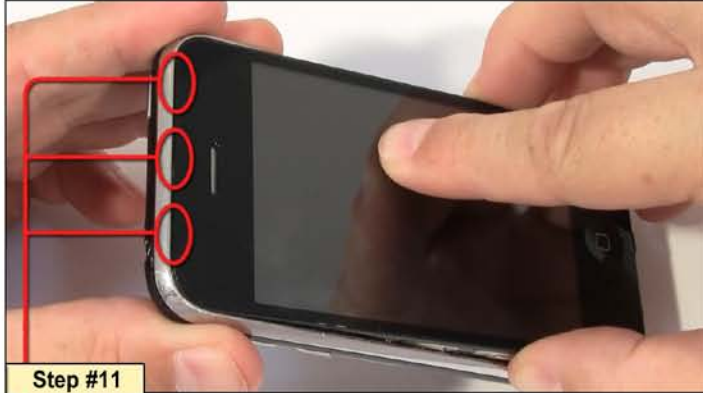
Step #9

Gently push down to reposition the white plastic connector to secure the **3** ribbon.



Step #10

Reconnect the **1** & **2** cables, carefully snapping them into place.



Step #11

Screen assembly connects to case at receiver end. **Note:** the positions of 3 tabs that connect to the chrome bezel. Ribbons must stay connected.



Step #12

Replace the two bottom case screws into the case.



Step #13

Finally replace the simcard to complete the reassembly of your iPhone 3GS.