



DirectFix

We Provide the Parts - You Fix It

INSTALLATION DIRECTIONS IPHONE 3GS REPLACEMENT LCD SCREEN ASSEMBLY IP-2321



Sim Card Ejection Tool IP-2292



Mini Philips Driver XX2240



Case Opener Tool XX1521



Screen Removal Suction Cup XX2373

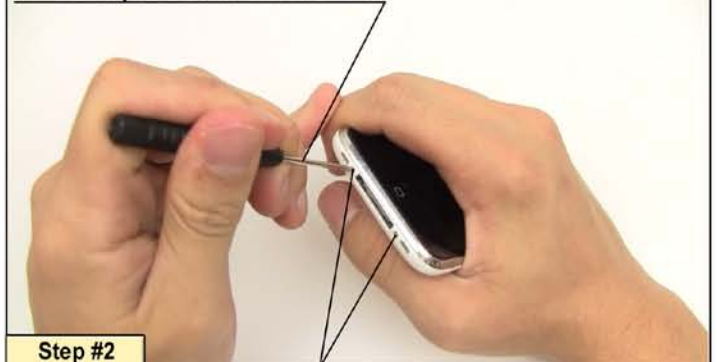
Sim Card Ejection Tool IP-2292



Step #1

Use the simcard ejection tool to remove the simcard and tray from the iPhone 3GS.

Mini Philips Screwdriver XX2240



Step #2

Remove the two phillips head screws from the bottom of the iPhone 3GS. Place them in a container to avoid losing them.

Suction Cup Tool XX2373



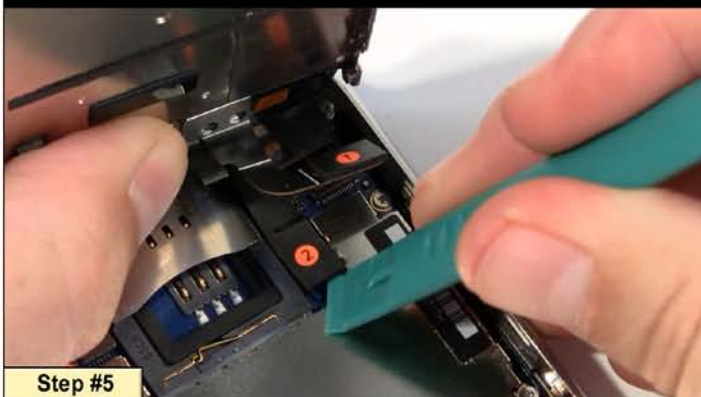
Step #3

Place the suction cup tool near the bottom of the glass top for optimal removal.



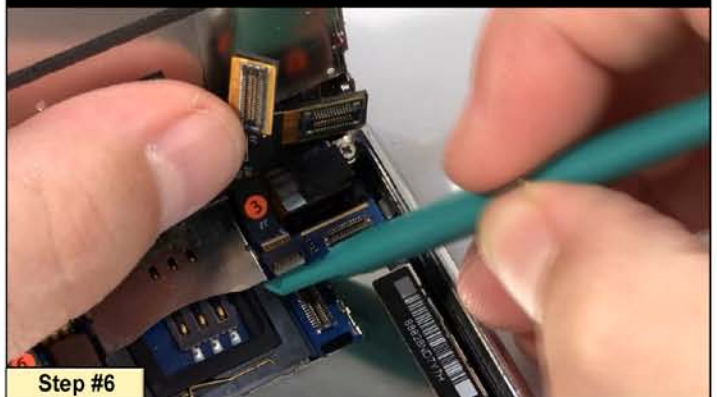
Step #4

Firmly grasp the back of the iPhone 3GS and the suction cup and pull apart the phone case carefully. Do not pull too hard as there are still cables connected in the unit.



Step #5

Use the case opener tool to remove these connections carefully. The connections are delicate. Avoid excessive force to preserve connector integrity.



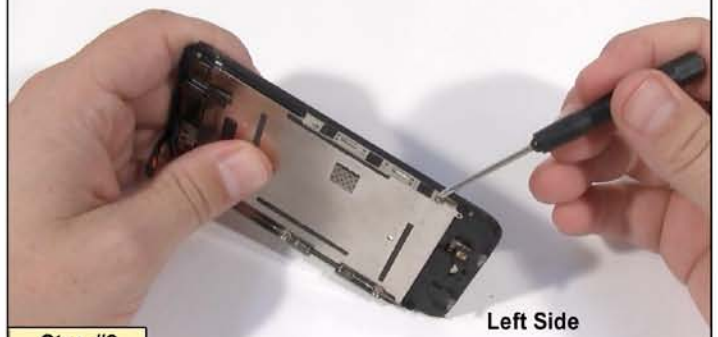
Step #6

Use the case opener tool to lift the small white plastic cable fastener housing pictured. This will allow the connector to slide upwards out of the housing.



Step #7

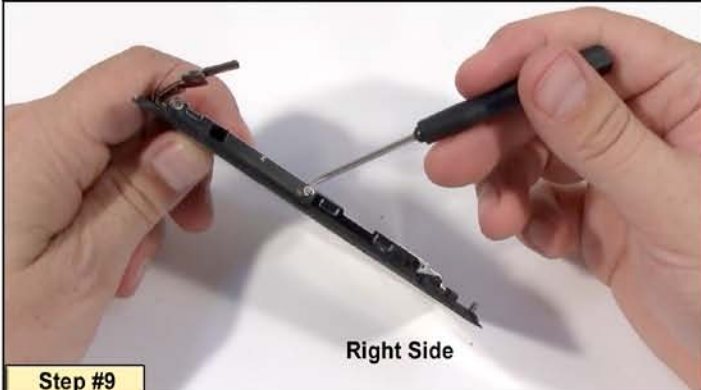
Once those connections have been removed you are able to separate the two major sections of the iPhone 3GS. Move to next step to continue replacing IP-2321.



Step #8

Left Side

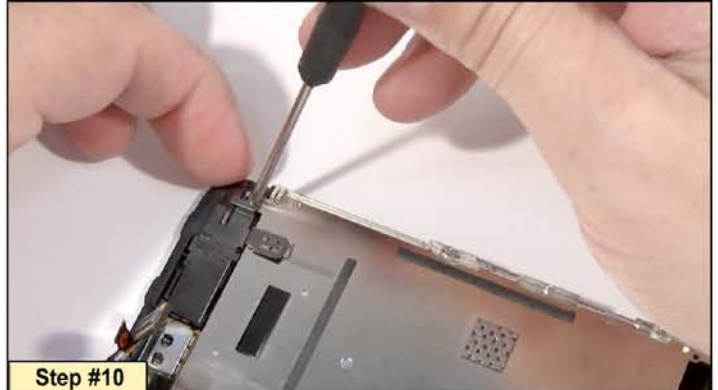
There are a total of 5 phillips head screws. Two on the left side of the complete screen and three on the right.



Step #9

Right Side

Right side pictured with screws required for disassembly.



Step #10

One more fastener screw remaining, pictured at the top of the LCD bracket, must be removed to separate the LCD assembly from the glasstop assembly.



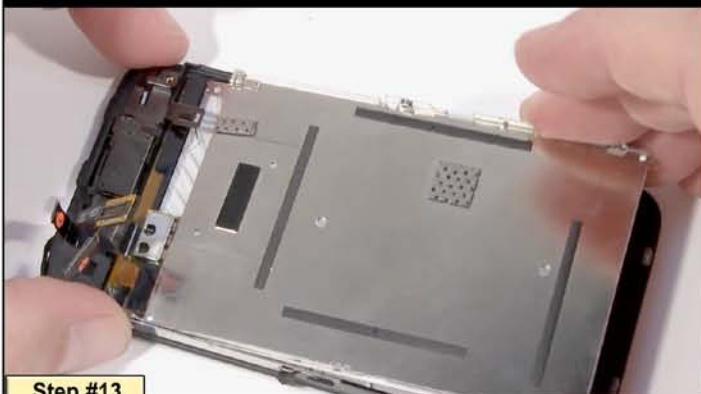
Step #11

Use a razorblade or thin metal pry tool to pry the LCD plate from the glasstop frame.



Step #12

Use the case opener tool to pry the LCD and mounting plate from the glasstop and frame.



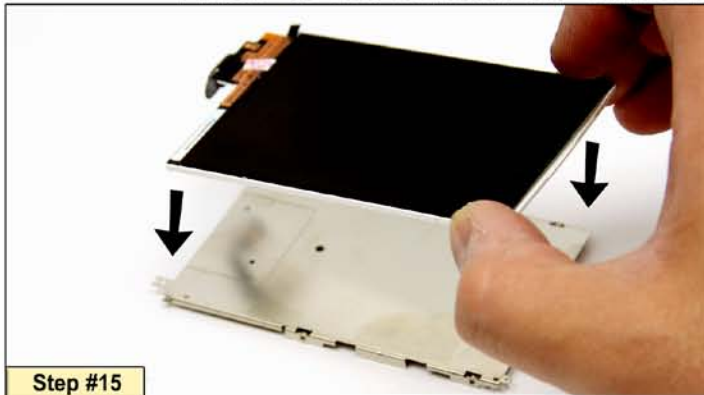
Step #13

Slide the LCD bracket and LCD out from the frame from top to bottom to remove it and set it aside.



Step #14

Use a case opener tool to pry the broken LCD screen from the LCD metal mounting bracket.



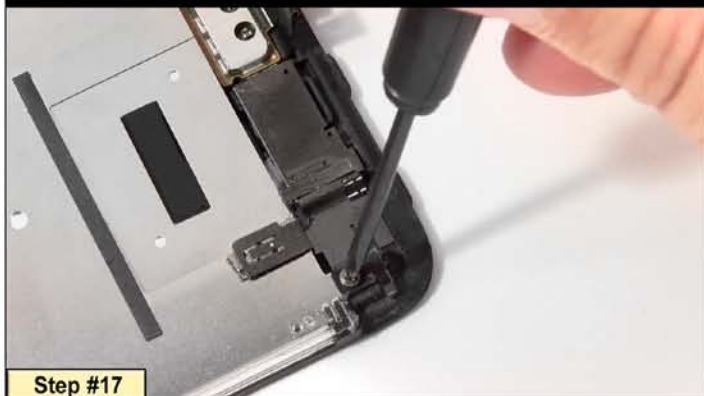
Step #15

Place the LCD as pictured noting the position and orientation of the bracket. The adhesive residue from the original part should be sufficient.



Step #16

The LCD assembly slides in to place as pictured aligning the receiver bracket, LCD frame and LCD metal plate to the fastener point shown.



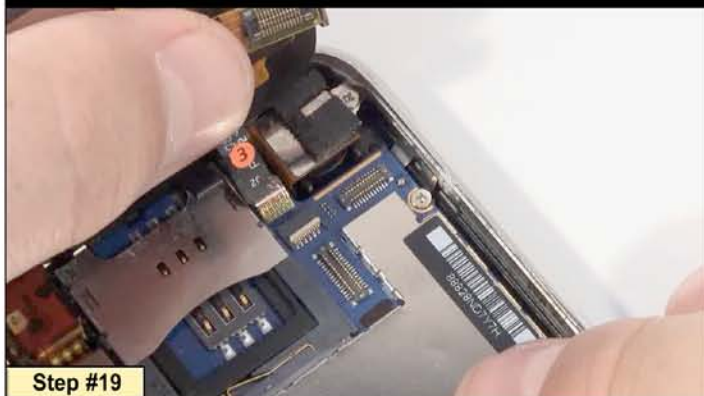
Step #17

The receiver bracket, LCD plate and glasstop frame assemblies connect here at this point using a single phillips screw.



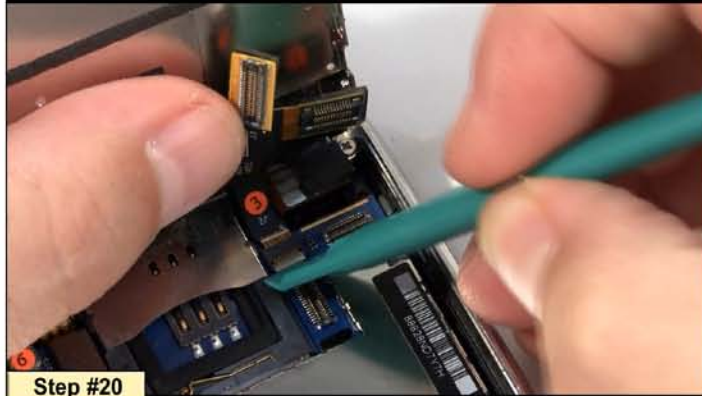
Step #18

Replace the 5 phillips head screws with the mini screwdriver. This will complete the screen assembly.



Step #19

Begin installation of replacement screen by sliding ③ ribbon into housing.



Step #20

Gently push down to reposition the white plastic connector to secure the ③ ribbon.



Step #21

Reconnect the ① & ② cables, carefully snapping them into place.



Step #22

Screen assembly connects to case at receiver end first. **Note:** the positions of 3 tabs that slide under chrome bezel on the receiver end.



Step #23

Replace the two bottom case screws into the case.



Step #24

Finally replace the simcard to complete the reassembly of your iPhone 3GS.