



DirectFix

We Provide the Parts - You Fix It

INSTALLATION DIRECTIONS IPHONE 3G BATTERY REPLACEMENT IP-2214



Sim Card Ejection Tool IP-2292



Mini Philips Driver XX2240



Case Opener Tool XX1521



Screen Removal Suction Cup XX2373

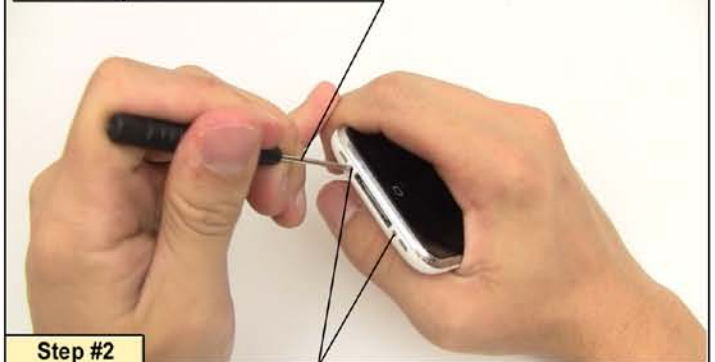
Sim Card Ejection Tool IP-2292



Step #1

Use the simcard ejection tool to remove the simcard and tray from the iPhone 3G.

Mini Philips Screwdriver XX2240



Step #2

Remove the two phillips head screws from the bottom of the iPhone 3G. Place them in a container to avoid losing them.

Suction Cup Tool XX2373



Step #3

Place the suction cup tool near the bottom of the glasstop for optimal removal.



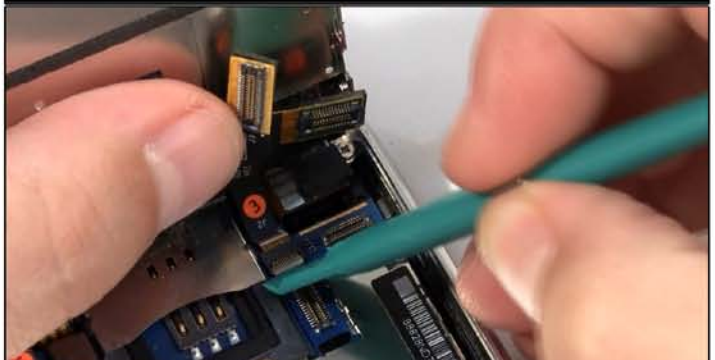
Step #4

Firmly grasp the back of the iPhone and the suction cup and pull apart the phone case carefully. Do not pull too hard as there are still cables connected in the unit.



Step #5

Use the case opener tool to removed the connections marked ① & ②. Avoid excessive force to preserve connector integrity.



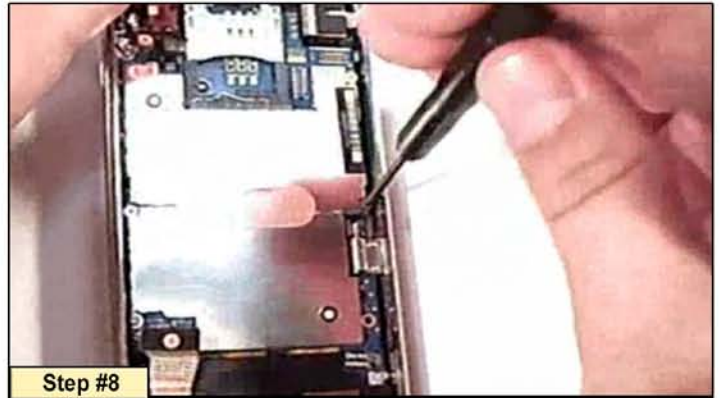
Step #6

Use the case opener tool to lift the small white plastic cable connector. This will allow the ③ ribbon to slide upwards out of the housing.



Step #7

Use the case opener tool to carefully disconnect the connectors depicted in the diagram below.



Step #8

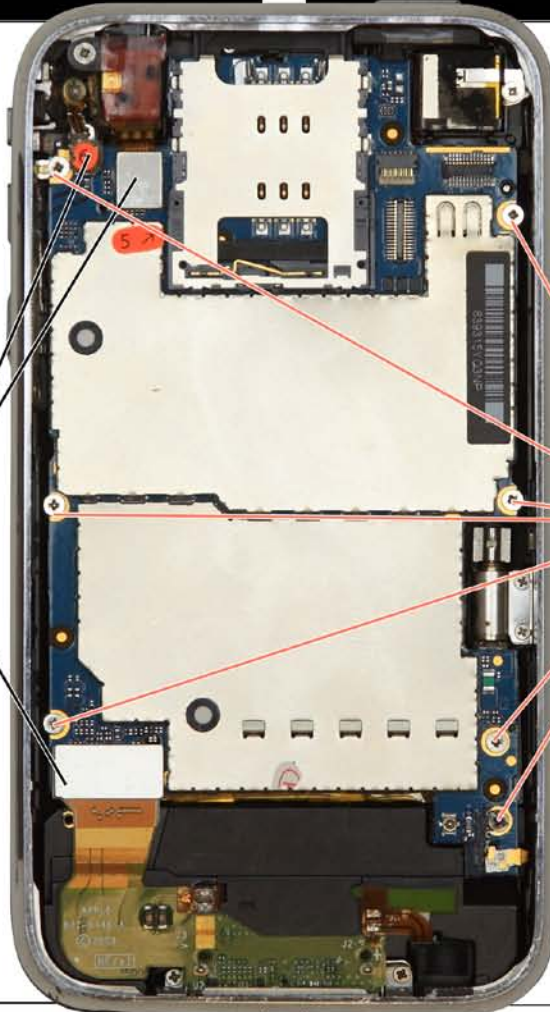
Use the diagram below to locate and remove the screws which fasten the main board to the case.



Case Opener Tool XX1521

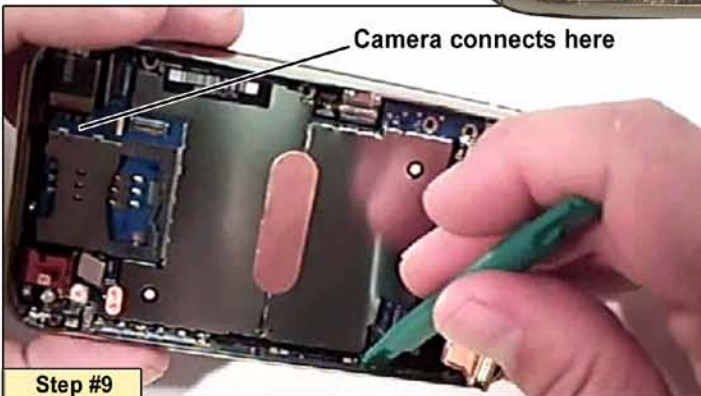


Mini Phillips Driver XX2240



There are 3 connections that must be disconnected prior to removing the main board.

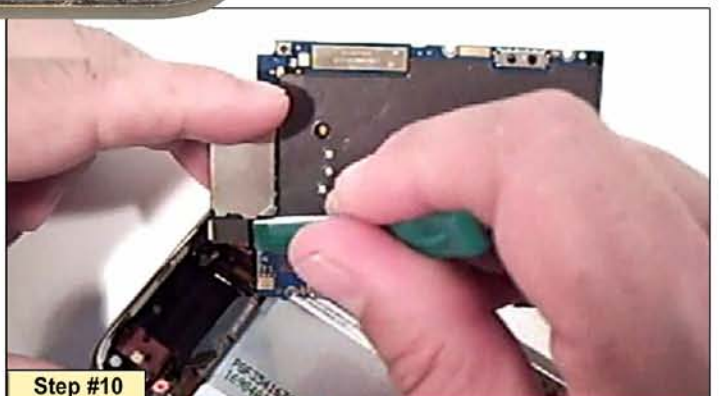
The main board is secured to the case by 7 phillips head screws. Use the mini screwdriver to remove them.



Camera connects here

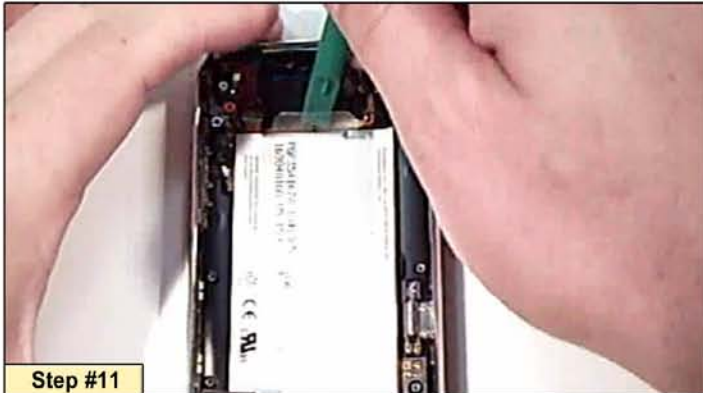
Step #9

Once all connectors and screws are removed you can use the case opener tool to carefully lift the main board out of the case. **WARNING:** The camera is still attached.



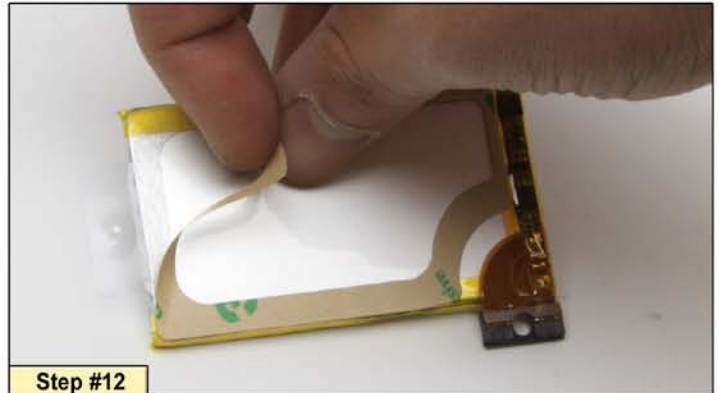
Step #10

Carefully disconnect the camera from the underside of the motherboard using the case opener tool. The battery is now visible.



Step #11

Remove the old battery from the case using the case opener tool. **WARNING:** Do NOT puncture or damage battery. Lithium Ion batteries can ignite when damaged.



Step #12

The IP-2214 Replacement battery includes adhesive mounting. Peel away the backing to expose the adhesive and prepare for placement in the case.



Step #13

Place the battery as seen here. **Note:** Battery connector must face up. A circular mounting hole in the battery connector should join with pictured mounting post.



Step #14

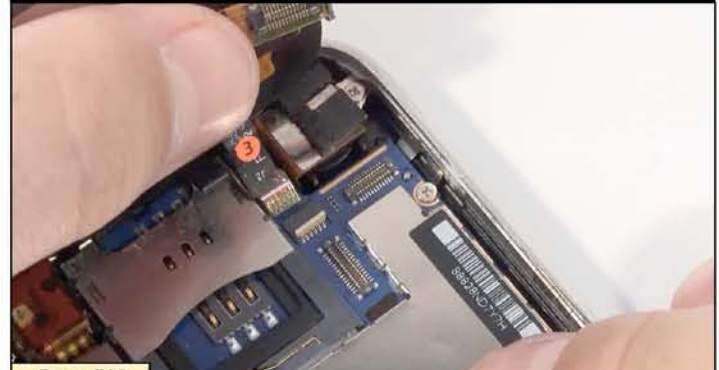
When mounting the motherboard the connectors on the battery and the vibrator must align as pictured with those shown on the motherboard.



Step #15

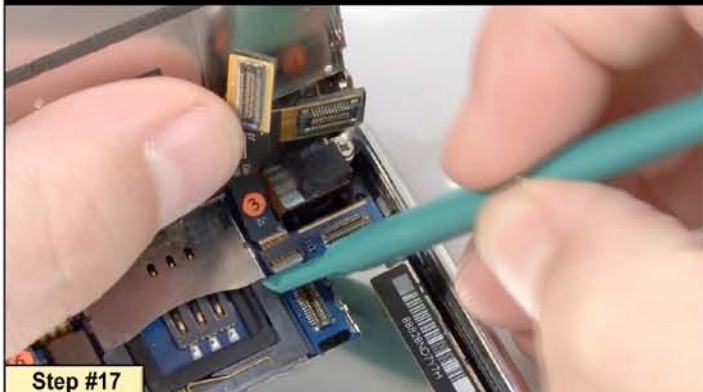
Refer to page 2 for connector/fastener placement.

The motherboard mounts into the case as pictured. There are seven screws and 3 connectors that must be reinstalled onto the motherboard.



Step #16

Begin installation of screen assembly by sliding ③ ribbon into housing.



Step #17

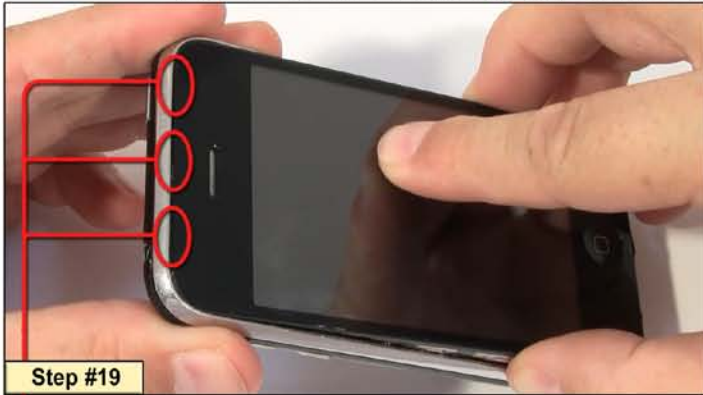
Gently push down to reposition the white plastic connector to secure the ③ ribbon.



Step #18

Reconnect the ① & ② cables, carefully snapping them into place.

PAGE 4: INSTALLATION DIRECTIONS FOR IP-2214 (CONTINUED)



Step #19

Screen assembly connects to case at receiver end first. **Note:** the positions of 3 tabs that slide under chrome bezel on the receiver end.



Step #20

Replace the two bottom case screws into the case.



Step #21

Finally replace the simcard to complete the reassembly of your iPhone 3G.