



# DirectFix

**We Provide the Parts - You Fix It**

## INSTALLATION DIRECTIONS

IPHONE 3G REPLACEMENT TOUCH PANEL, DIGITIZER GLASSTOP IP-2213



Sim Card Ejection Tool IP-2292



Mini Philips Driver XX2240



Case Opener Tool XX1521



Screen Removal Suction Cup XX2373

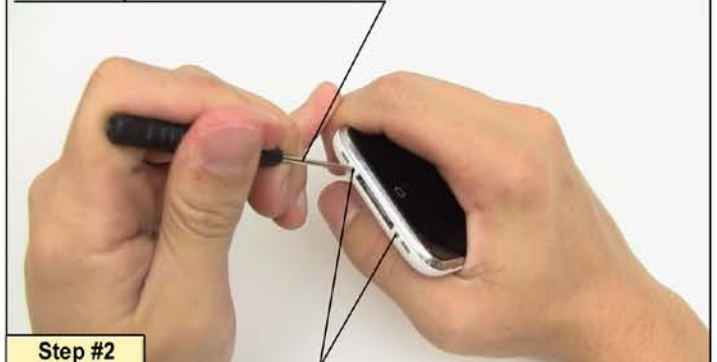
Sim Card Ejection Tool IP-2292



Step #1

Use the simcard ejection tool to remove the simcard and tray from the iPhone 3G.

Mini Philips Screwdriver XX2240



Step #2

Remove the two phillips head screws from the bottom of the iPhone 3G. Place them in a container to avoid losing them.

Suction Cup Tool XX2373



Step #3

Place the suction cup tool near the bottom of the glasstop for optimal removal.



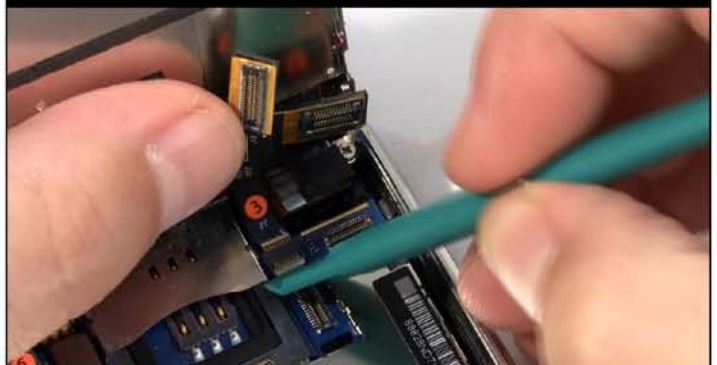
Step #4

Firmly grasp the back of the iPhone and the suction cup and pull apart the phone case carefully. Do not pull too hard as there are still cables connected in the unit.



Step #5

Use the case opener tool to remove these connections carefully. The connections are delicate. Avoid excessive force to preserve connector integrity.



Step #6

Use the case opener tool to lift the small white plastic cable fastener housing pictured. This will allow the connector to slide upwards out of the housing.



Step #7

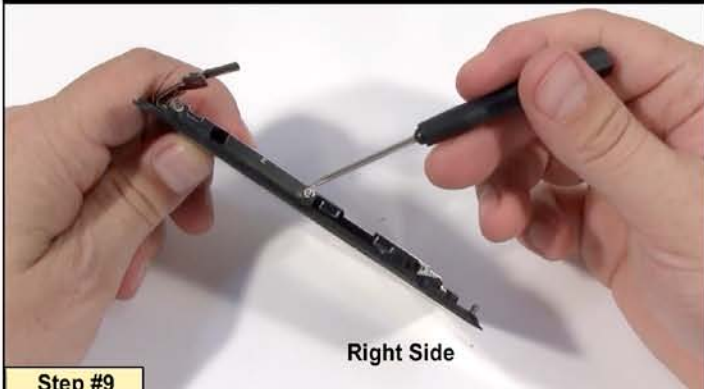
Once those connections have been removed you are able to separate the two major sections of the iPhone 3G. Move to the next step to continue replacing IP-2213.



Step #8

Left Side

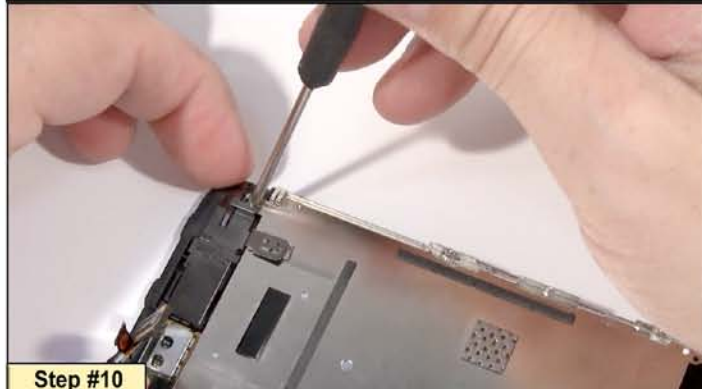
There are a total of 5 phillips head screws. Two on the left side of the complete screen and three on the right.



Step #9

Right Side

Right side pictured with screws required for disassembly.



Step #10

One more fastener screw remaining, pictured at the top of the LCD bracket, must be removed to separate the LCD assembly from the glasstop assembly.



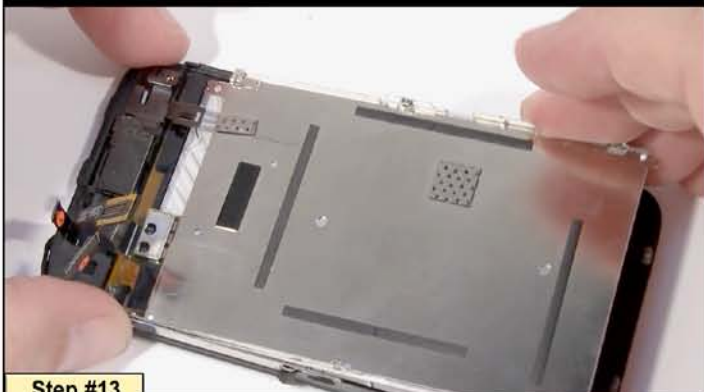
Step #11

Use a razorblade or thin metal pry tool to pry the LCD plate from the glasstop frame.



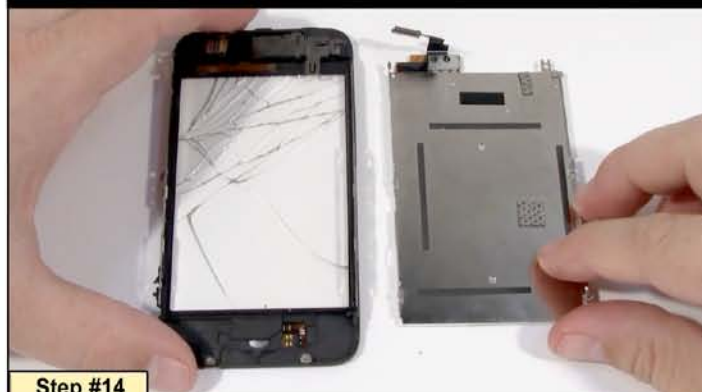
Step #12

Use the case opener tool to pry the LCD and mounting plate from the glasstop and frame.



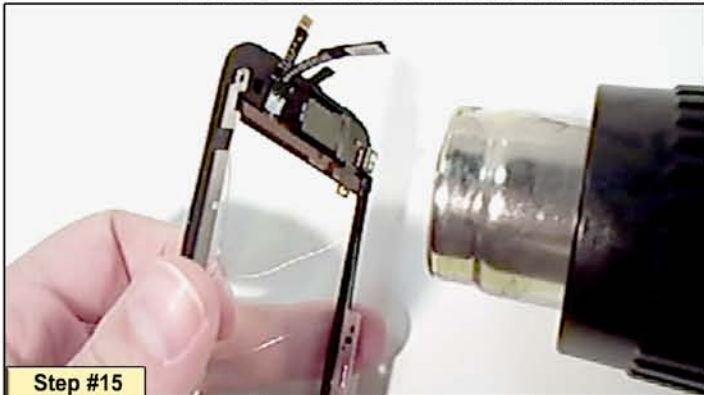
Step #13

Slide the LCD bracket and LCD out from the frame from top to bottom to remove it and set it aside.



Step #14

You have separated the broken glasstop from the LCD.



Step #15

Use a heat gun to apply moderate heat to the glasstop frame assembly to soften the adhesive. Applying too much heat can warp the frame.



Step #16

Use the case opener tool to separate the glasstop from the frame after the adhesive has been softened. Set frame aside and discard the damaged glasstop unit.



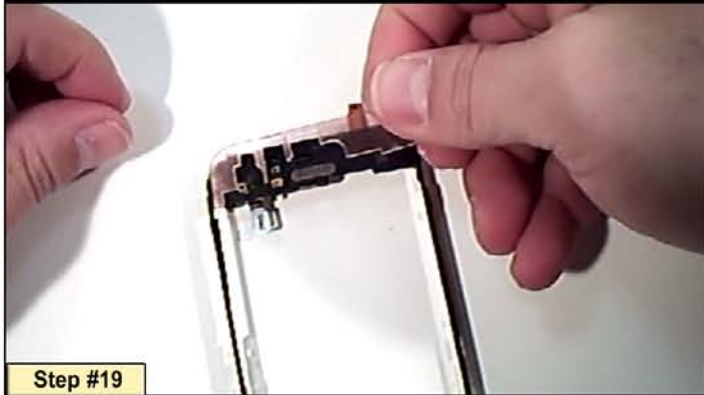
Step #17

Remove the excess adhesive residue from the front of the screen frame to clean the unit for new adhesive strip installation.



Step #18

The new adhesive strips are double sided. Ensure that the surface connected to the sticker paper backing is that which adheres to the screen frame's surface.



Step #19

Here's the top adhesive strip alignment position.



Step #20

Here's the bottom adhesive strip alignment position.



Step #21

Once adhesive strips are applied to the LCD frame, the second side of the strips can be exposed by peeling the tabs protruding from the strips.



Step #22

Carefully place the glasstop onto the adhesive on the LCD frame sliding the ribbon connector of the glasstop behind the LCD frame as pictured.



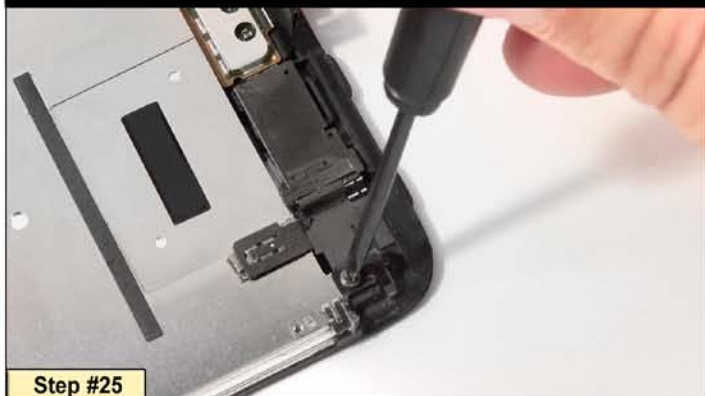
Step #23

After completing the glasstop and frame assembly the LCD can be mounted to the glasstop and frame.



Step #24

The LCD assembly slides in to place as pictured aligning the receiver bracket, LCD frame and LCD metal plate to the fastener point shown.



Step #25

The receiver bracket, LCD plate and glasstop frame assemblies connect here at this point using a single phillips screw.



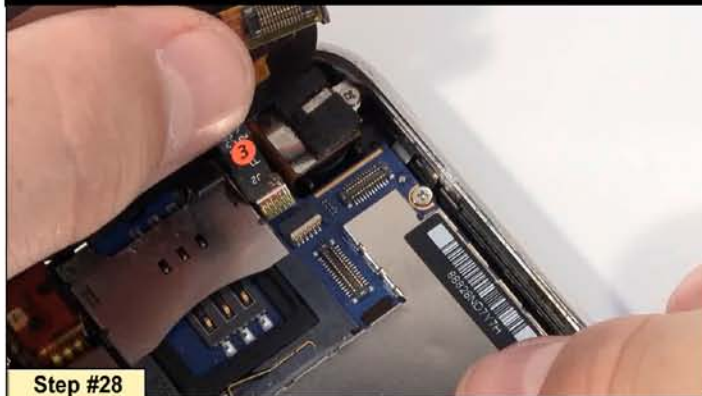
Step #26

There are 5 additional phillips head screws needed to connect the LCD to the LCD frame. These need to be replaced for resassembly.



Step #27

The assembled screen can now be combined with the main chassis assembly. Meet the two sections together at the receiver end (top) as seen here.



Step #28

Carefully reconnect the pictured cable to the housing as shown sliding downward.



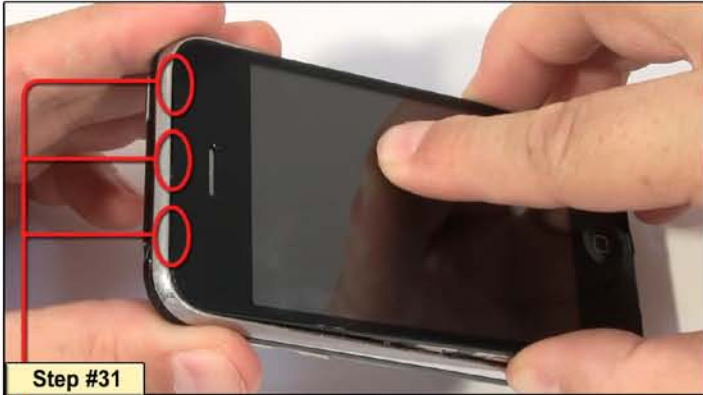
Step #29

Gently reposition the white plastic cable housing to secure the pictured cable.



Step #30

Reconnect the two pictured connections carefully snapping them into place.



Step #31

Screen assembly connects to case at receiver end first. **Note:** the positions of 3 tabs that slide under chrome bezel on the receiver end.



Step #32

Replace the two case screws into the chassis to fasten the screen assembly to the case.



Step #33

Finally replace the simcard to complete the reassembly of your iPhone 3G.



# DirectFix

**We Provide the Parts - You Fix It**